

Let's make sailing safer

At Mac N Hom Marine Equipments (P) Ltd., we are focused on range of products that meet the ever increasing demands of Marine based customers in terms of sophistication and diversification. We have brought to market innovative products, one after another to provide only the highest quality goods and services for your requirements and offer customised solutions and challenging applications quickly and cost effectively.



Hydraulic Steering Systems : Model. HERCULES



IRS Applied

Balanced Hydraulic actuator- **Model: HERCULES**
With Swivel Rod Eye to Connect with Tiller Arm

- ▶ More than 150 installations in Passanger Ferries of 100/200 pax, medium Barges, Choonda Boats.
- ▶ Torque Rating of 3111Nm with 220mm Tiller Arm
- ▶ Heavy Duty Ram size: 40mm
- ▶ Second Thread on other end of Piston Rod for Emergencies.
- ▶ 12 Months Warranty against Manufact. Defects
- ▶ On-Line Installation and Service Support
- ▶ Spares including Seal kits readily available

- 1 Manual-Hydraulic Version with Helm Pump, Steering Wheel
- 2 Marine Paint Coated, Ferruled Nut ends Seamless Steel Tubes for Smooth Oil Flow
- 3 Joystick operated Control Panel with Audio-Visual Alarms
- 4 Electro-Hydraulic Power pack with Sensors for Electro Hydraulic Version
- 5 Self-Priming Unit

Manual-Hydraulic Package:

- ❖ Steering Wheel - Wooden/SS
- ❖ Helm Pump, Steering Column & Self priming unit
- ❖ Marine Painted Ferruled Seamless steel Tubes & Hoses
- ❖ Hydraulic Actuator-**HERCULES**

Electro-Hydraulic Package:

- ❖ Joystick Control Panel
- ❖ Hydraulic Power pack & Sensors
- ❖ Emergency Manual-Hydraulic Steering
- ❖ Marine coated Ferrules Tubes & Hoses
- ❖ Hydraulic Actuator - **HERCULES**



MAC•N•HOM MARINE EQUIPMENTS (P) LTD.

57/187-C, 'VRINDAVAN', Chilavannur Road, Kadavanthra, Kochi-682 020, Kerala, India

Mob.: + 91 9072900576, +91 484 2312396, 2319998, E-mail: info@macnhomsystems.com web site: www.macnhomsystems.com

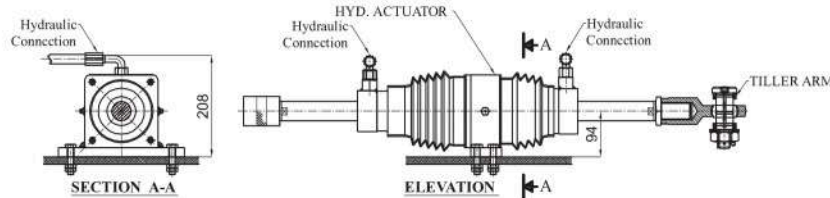
CIN: U29308KL2018PTC055182



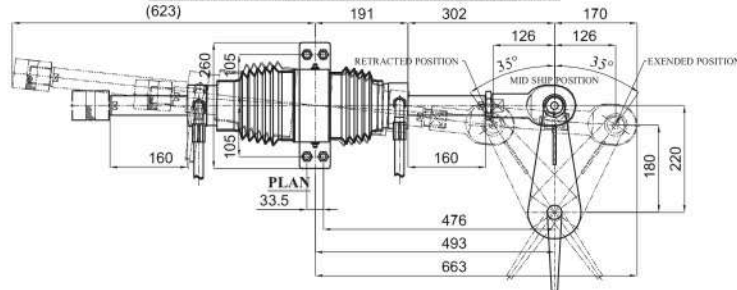
SPECIFICATIONS

- Actuator Ram Diameter : 40 mm.
- Actuator Stroke : 260 mm.
- Force @ 70 Kg. / cm² Hydraulic Pressure : 1446 Kgf.
- Torque with 180 mm. Tiller Arm for ±45° turn from Midship (Actuator Pin to Rudder Shaft Centre distance : 180 mm.) : 259 Kgm.
- Torque with 220 mm Tiller Arm for ±35° turn from Midship (Actuator Pin to Rudder Shaft Centre distance : 220 mm.) : 317 Kgm.

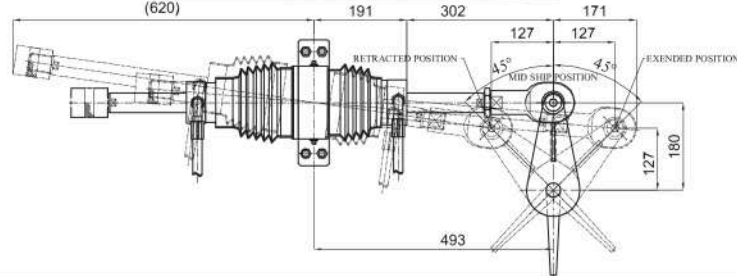
MOUNTING ARRANGEMENT OF HYD. ACTUATOR HERCULES - IRS



TILLER ARM FOR ± 35° TURN FROM MIDSHIP



TILLER ARM FOR ± 45° TURN FROM MIDSHIP



DATA FOR STEERING SELECTION

VESSEL DETAILS

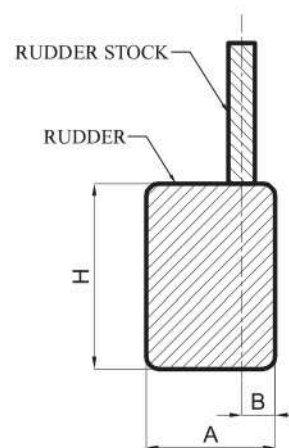
Length of the Vessel		Meters
Breadth of Vessel		Meters
Draft of the Vessel		Meters
Hull form (Mono / Catamaran)		
No of Engines		Nos.
Power of each Engine		HP
Speed of Vessel		Knots

RUDDER DETAILS (See Rudder Dwg.)

Breadth of Rudder A		Meters
Breadth of Semi-balanced Area B		Meters
Height of Rudder H		Meters
Number of Rudders		Nos.

Vessel Regn. Class - No Class / IRS / RINA / DNV / BV

RUDDER DWG.



- NOTES : 1. Please fill in this data sheet with your Vessel data, and email to info@macnhomsystems.com OR Whatsapp to +91 90729 00576.
 2. All dimensions are in mm.
 3. Dimensions are reference purpose only; kindly confirm with our Technical Department.