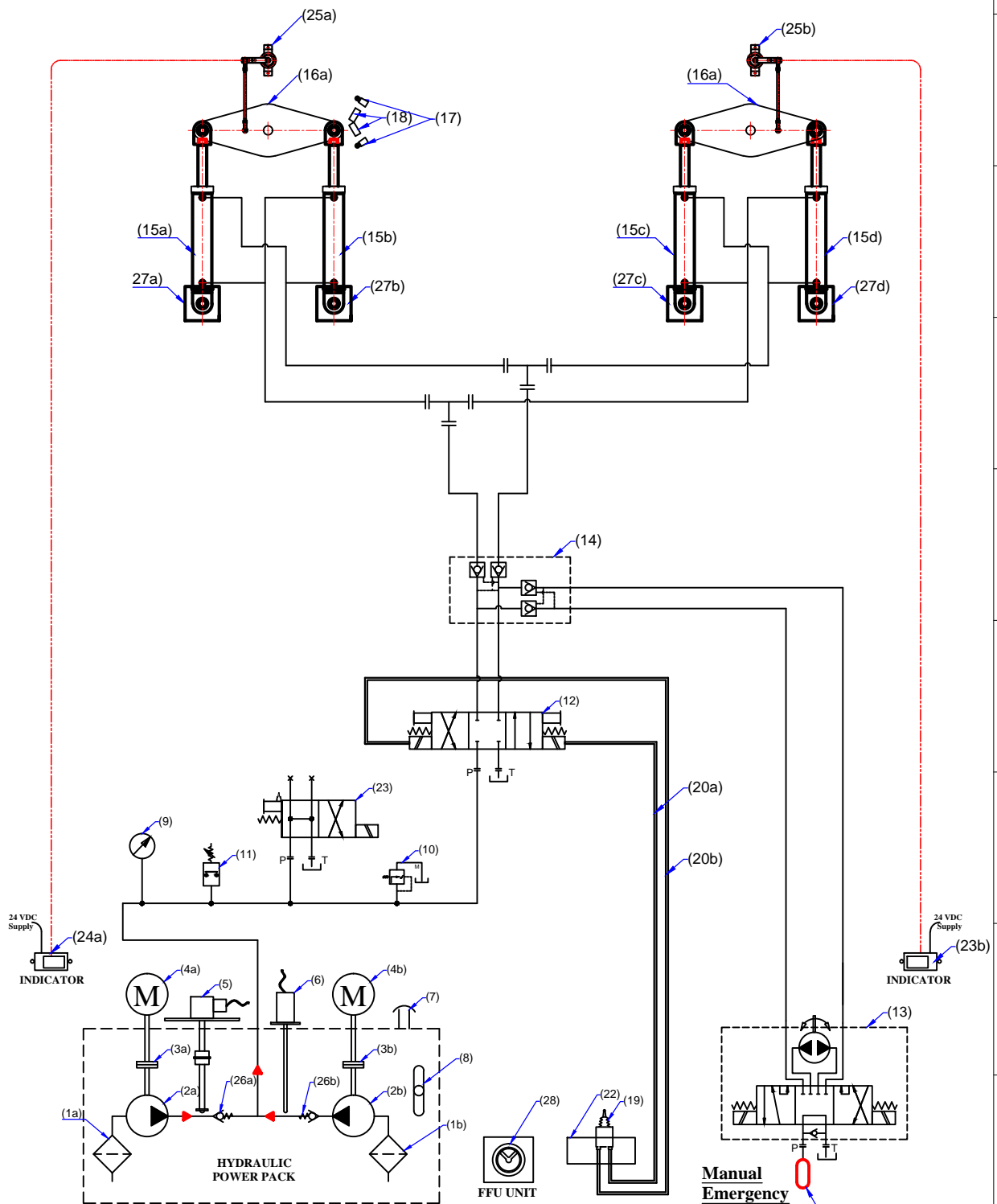


Electro-Hyd. - JumboZ - 2800 - 2x 2



**MAC ♦ N ♦ HOM SYSTEMS
KOCHI - 20**

DESIGNATION

DWG. No.

DATE

PLC SYNCHRONISATION

MHS-4123 - 1of 2

21.05.2024

A

B

C


D

E

F

G

H

	A	B	C	D	E	F	G	H																																																											
1	<u>ELECTRO - HYDRAULIC CIRCUIT</u> <u>SYSTEM PARAMETERS</u>								1																																																										
2									2																																																										
3	1. PUMP CAPACITY Discharge :9Lpm. Max. Pressure : 200kg/cm²								3																																																										
4	2. HYDRAULIC CYLINDER Model : JumboZ -2800 Stroke : 440mm. Ram : 50mm. Operating Pressure : 70kg./cm²								4																																																										
5	3. Helm Steering Wheel Diameter : 686mm. (27")								5																																																										
6	4. HYDRAULIC HOSE Grade : R1 I D : 1/2"								6																																																										
7	5. ELECTRIC MOTOR 5HP, 1440RPM, 50Hz.3Phase.								7																																																										
8									8																																																										
9									9																																																										
10									10																																																										
	LEGENDS:																																																																		
					<table border="1"> <thead> <tr> <th>Sl No.</th> <th>Description</th> </tr> </thead> <tbody> <tr><td>1a,1b.</td><td>Suction Strainer</td></tr> <tr><td>2a,2b.</td><td>Hydraulic pump</td></tr> <tr><td>3a,3b.</td><td>Flexible Coupling</td></tr> <tr><td>4a,4b.</td><td>Electric Motor</td></tr> <tr><td>5</td><td>Oil Level Sensor</td></tr> <tr><td>6</td><td>Oil Temp. Sensor</td></tr> <tr><td>7</td><td>Filler Breather</td></tr> <tr><td>8</td><td>Dip Stick</td></tr> <tr><td>9</td><td>Pressure Gauge</td></tr> <tr><td>10</td><td>Pr.Relief Valve</td></tr> <tr><td>11</td><td>Pre.Switch,Low Pre.Alarm</td></tr> <tr><td>12</td><td>Sol.Ope.Directionl Valve</td></tr> <tr><td>13</td><td>Emergency Manual Pump</td></tr> <tr><td>14</td><td>Pilot Operated Check Valve</td></tr> <tr><td>15a,15b,15c,15d</td><td>Hyd. Actuator</td></tr> <tr><td>16a,16b</td><td>Tiller Arm</td></tr> <tr><td>17</td><td>Limit Switch</td></tr> <tr><td>18</td><td>Mechanical Stopper (Yard Supply)</td></tr> <tr><td>19</td><td>Joy Stick</td></tr> <tr><td>20a,20b</td><td>Ele.Line to Sol.Ope.Valve</td></tr> <tr><td>21</td><td>Reservoir</td></tr> <tr><td>22</td><td>Steering Gear Control Panel</td></tr> <tr><td>23</td><td>Unloading Valve</td></tr> <tr><td>24a,24b</td><td>Rudder Angle Indicator</td></tr> <tr><td>25a,25b</td><td>Rudder Angle Sensor</td></tr> <tr><td>26a,26b</td><td>Non-return Valve</td></tr> <tr><td>27a,27b</td><td>Rear end bkt.</td></tr> <tr><td>28</td><td>FFU Unit</td></tr> </tbody> </table>				Sl No.	Description	1a,1b.	Suction Strainer	2a,2b.	Hydraulic pump	3a,3b.	Flexible Coupling	4a,4b.	Electric Motor	5	Oil Level Sensor	6	Oil Temp. Sensor	7	Filler Breather	8	Dip Stick	9	Pressure Gauge	10	Pr.Relief Valve	11	Pre.Switch,Low Pre.Alarm	12	Sol.Ope.Directionl Valve	13	Emergency Manual Pump	14	Pilot Operated Check Valve	15a,15b,15c,15d	Hyd. Actuator	16a,16b	Tiller Arm	17	Limit Switch	18	Mechanical Stopper (Yard Supply)	19	Joy Stick	20a,20b	Ele.Line to Sol.Ope.Valve	21	Reservoir	22	Steering Gear Control Panel	23	Unloading Valve	24a,24b	Rudder Angle Indicator	25a,25b	Rudder Angle Sensor	26a,26b	Non-return Valve	27a,27b	Rear end bkt.	28	FFU Unit	
Sl No.	Description																																																																		
1a,1b.	Suction Strainer																																																																		
2a,2b.	Hydraulic pump																																																																		
3a,3b.	Flexible Coupling																																																																		
4a,4b.	Electric Motor																																																																		
5	Oil Level Sensor																																																																		
6	Oil Temp. Sensor																																																																		
7	Filler Breather																																																																		
8	Dip Stick																																																																		
9	Pressure Gauge																																																																		
10	Pr.Relief Valve																																																																		
11	Pre.Switch,Low Pre.Alarm																																																																		
12	Sol.Ope.Directionl Valve																																																																		
13	Emergency Manual Pump																																																																		
14	Pilot Operated Check Valve																																																																		
15a,15b,15c,15d	Hyd. Actuator																																																																		
16a,16b	Tiller Arm																																																																		
17	Limit Switch																																																																		
18	Mechanical Stopper (Yard Supply)																																																																		
19	Joy Stick																																																																		
20a,20b	Ele.Line to Sol.Ope.Valve																																																																		
21	Reservoir																																																																		
22	Steering Gear Control Panel																																																																		
23	Unloading Valve																																																																		
24a,24b	Rudder Angle Indicator																																																																		
25a,25b	Rudder Angle Sensor																																																																		
26a,26b	Non-return Valve																																																																		
27a,27b	Rear end bkt.																																																																		
28	FFU Unit																																																																		
	MAC ♦ N ♦ HOM SYSTEMS KOCHI - 20				DESIGNATION PLC SYNCHRONISATION		DWG. No. MHS-4123 - 2of 2	DATE 21.05.2024																																																											
	 A	B	C	D	E	F	G	H																																																											