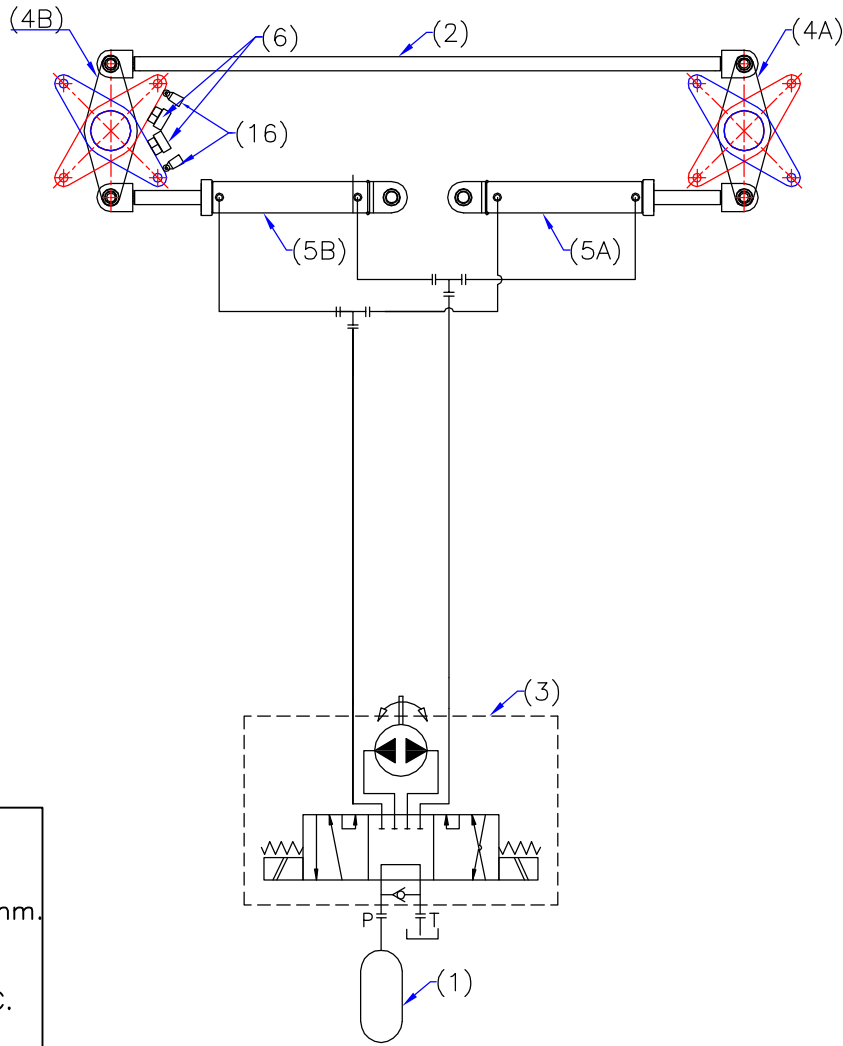


# HYD. CIR. JumboZ-500 MANUAL STEERING



### SPECIFICATIONS

1. Tiller Radius : 300mm.
2. Pump Capacity:—  
MANUAL : 80CC/SEC.
3. HYD. ACTUATOR:—  
BORE : 55MM.  
STROKE : 440MM.
4. PIPE :—  
OD -16MM.  
ID -12MM.

1	Oil Reservoir
2	Connection Rod
3	Helm Pump
4A,4B	Tiller Arm
5A,B	HYD. ACTUATOR
6	MECHANICAL STOPPER (CUSTOMER SUPPLY)
Sino	Description

### OPERATING PARAMETERS

Torque rating – 7000Nm. at 0° Rudder Angle and 5892 Nm., at 35° Rudder Angle, Considering 2 Hydraulic Actuators Connected to a Rudder through Tiller Arm of 300mm. Radius.  
Working Pressure 70Kg./cm<sup>2</sup>.

### ALTERATIONS at ⓑ :-

1. Notes in Specifications and Operating Parameters added.
2. ELECTRO HYDRAULIC PART REMOVED

Unspecified Machining Deviations			Angular Dimensions				ITEM	SCALE	MATERIAL	VIEW	DRAWN	CHECKED
Linear Dimensions			Length of Shorter Side of Angle	Deviation in		/	NTS	/		JK	VUK	
ABOVE	UPTO	DEVIATIONS		MM	Degree or minutes	DESIGNATION		DWG NO	DATE	QTY		
			Above	Upto								
										<b>MAC ♦ N ♦ HOM SYSTEMS</b>		
										<b>KOCHI - 20</b>		

**Hyd. Cir. JumboZ-500  
Emergency Steering**

MHS-JZ-605B

26.12.2019

/