

Let's make sailing safer

At Mac N Hom Marine Equipments (P) Ltd., we are focused on range of products that meet the ever increasing demands of Marine based customers in terms of sophistication and diversification. We have brought to market innovative products, one after another to provide only the highest quality goods and services for your requirements and offer customised solutions and challenging applications quickly and cost effectively.

MAC♦N♦HOM
MARINE EQUIPMENTS (P) LTD.
 Let's make sailing safer



Hydraulic Steering Systems

MATSYA
 Hydraulic Steering



- ✧ Heavy duty JumboZ-300 Hydraulic Actuators
- ✧ Jacketed Hydraulic Oil Tank with Sea Water Cooling Provision
- ✧ Taper Shaft Pump & Pulley for Engine Drive
- ✧ Easy Belt setting facility
- ✧ Easy Change over to Manual-Hydraulic Steering incase of Emergencies

- ✧ Torque rating up to 300kg.m
- ✧ Tiller Arm turn up to 45 degrees on both sides
- ✧ Used in Catamaran & Single Rudder vessels
- ✧ Used in Purse-seine & Fishing Trawler vessels
- ✧ Heavy Duty Ram Size: 30mm x 2 nos

- 1 Manual-Hydraulic Version with Helm Pump, Steering Wheel
- 2 JumboZ-300 Installation in Vessel
- 3 Marine Paint Coated, Ferruled Nut ends Seamless Steel Tubes for Smooth Oil Flow
- 4 Self-Priming Unit
- 5 JumboZ-300 Actuators
- 6 Jacketed Hydraulic Power pack with Sea Water Cooling Provision

Package Includes:

- ★ Steering Wheel - Wooden/SS
- ★ Helm Pump, Steering Column & Self priming unit
- ★ Marine Painted Ferruled Seamless steel Tubes & Hoses
- ★ Hydraulic Actuators-JumboZ-300
- ★ Jacketed Hydraulic Power pack with sea water cooling provision
- ★ Emergency Manual-Hydraulic Steering



MAC♦N♦HOM MARINE EQUIPMENTS (P) LTD.

57/187-C, 'VRINDAVAN', Chilavannur Road, Kadavanthra, Kochi-682 020, Kerala, India

Mob.: + 91 9072900576, +91 484 2312396, 2319998, E-mail: info@macnhomsystems.com web site: www.macnhomsystems.com

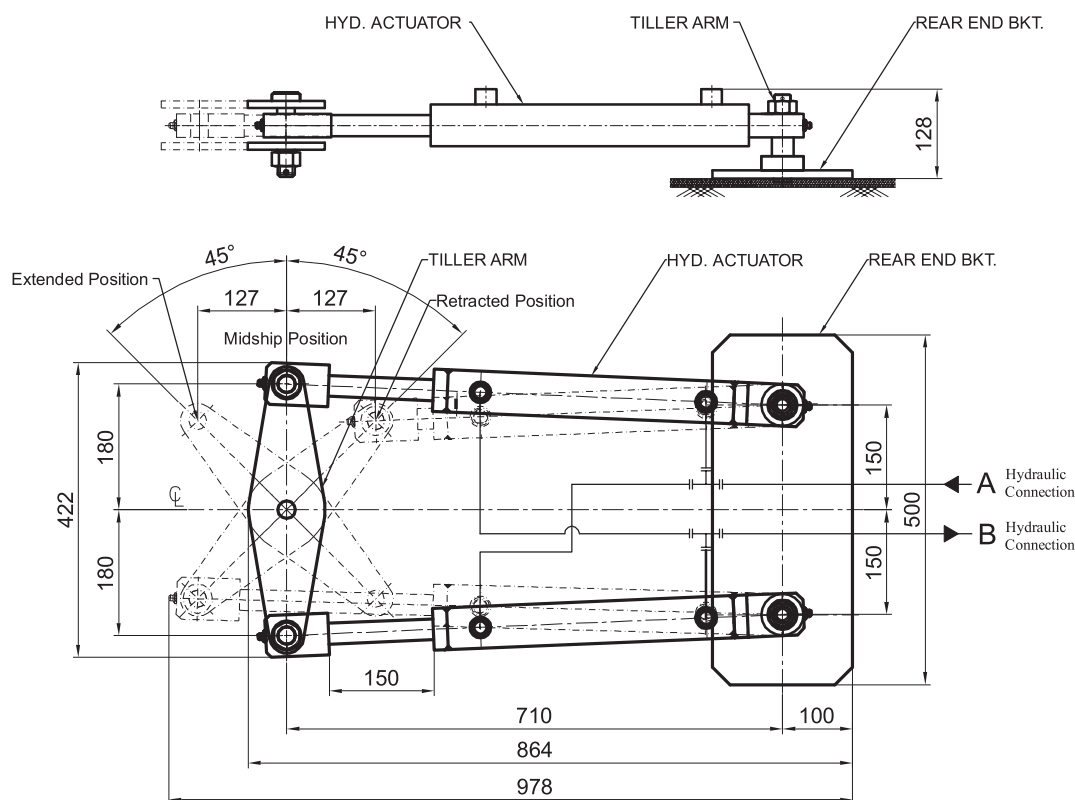
CIN: U29308KL2018PTC055182



SPECIFICATIONS

- Actuator Ram Diameter : 30 mm. x 2
- Actuator Stroke : 260 mm.
- Force @ 80 Kg / cm² Hydraulic Pressure : 2252 Kg.
- Torque with 300mm. Tiller Arm upto $\pm 45^\circ$ turn from Midship.
(Actuator Pin to Rudder Shaft Centre distance : 300mm.) : 405 Kg.m.

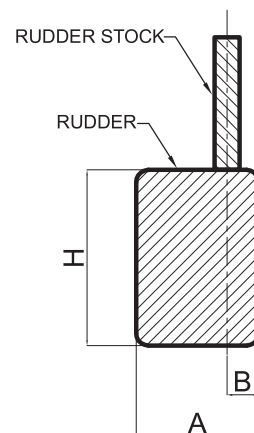
MOUNTING ARRANGEMENT OF HYD. ACTUTOR Matsya



DATA FOR STEERING SELECTION

VESSEL DETAILS		
Length of the Vessel		Meters
Breadth of Vessel		Meters
Draft of the Vessel		Meters
Hull form (Mono / Catamaran)		
No of Engines		Nos
Power of each Engine		HP
Speed of Vessel		Knots
RUDDER DETAILS (See Rudder Dwg.)		
Breadth of Rudder A		Meters
Breadth of Semi-balanced Area B		Meters
Height of Rudder H		Meters
Number of Rudders		Nos
Vessel Regn. Class - No Class / IRS / RINA / DNV / BV		

RUDDER DWG.



NOTES : 1. Please fill in this data sheet with your Vessel data, and email to info@macnhomsystems.com OR Whatsapp to +91 90729 00576.
2. All dimensions are in mm.
3. Dimensions are reference purpose only; kindly confirm with our Technical Department.